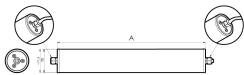
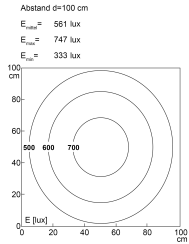


LED surface mounted tube luminaire



Product-Nr.	115310-01
EAN:	4260556621692
Model:	INROLED_70 with Borosilicate Glass Protective Tube
Order number:	115310-01
Model:	INROLED_70 with Borosilicate Glass Protective Tube
Type:	LED surface mounted tube luminaire
Illuminant:	SMD LED
Power consumption:	~21 W
Lamp luminous flux:	3340 lm
Lamp luminous efficiency:	~155 lm/W
Light distribution:	Direct
Light colour:	5700K 3-step MacAdam
Colour rendering (Ra):	>85
Supply voltage:	24V DC ± 10%
Connection (connector):	Cable entry, internal clamp
Degree of protection:	IP67/IP69K
Class of protection:	III
Glare control:	Microprisms
Beam angle (optics):	125°
Operating temperature:	14 °F - 113 °F
Lamps lifetime:	> 100,000 h (L80/B10)
Housing material:	aluminium inside
Cover material:	tempered glass, shatterproof
Height [B] x Width [C]:	Ø ~2,76"
Length [A]:	~36,26"
Weight (net):	~60 oz
Gross weight:	~85 oz
Risk group (DIN EN 62471):	Free group
Markings:	CE, UKCA, ETL Listed (5003529)
Dimmable:	Optional via accessories
Mounting accessories:	Optional
Made in:	Germany
Feature:	cascadable (max. 4.0 A)
cascadable:	yes