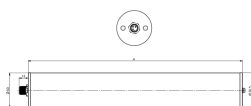
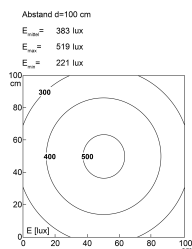


LED tube luminaire



Product-Nr.	158110-01
EAN:	4260556628301
Model:	INROLED 50 CleanPro POWER
Order number:	158110-01
Model:	INROLED 50 CleanPro POWER
Type:	LED tube luminaire
Illuminant:	SMD LED
Power consumption:	~16,3 W
Lamp luminous flux:	2531 lm
Lamp luminous efficiency:	~155 lm/W
Light distribution:	Direct
Light colour:	5700K 3-step MacAdam
Colour rendering (Ra):	>85
Supply voltage:	24V DC \pm 10%
Connection (connector):	M12 A-coded
Number of poles:	3
Degree of protection:	IP67/IP69K
Class of protection:	III
Glare control:	opal white
Beam angle (optics):	100°
Operating temperature:	-22 °F - 122 °F
Cleaning temperature:	Up to max. +176 °F (light off)
Storage temperature:	-22 °F - 176 °F (-30 °C - +80 °C)
Lamps lifetime:	> 100.000 h (L80/B10)
Housing material:	Tube – Polycarbonate, matte, shatter-resistant with Ecolab coating Cap/M12 plug – V4A stainless steel
impact resistance:	IK09
Height [B] x Width [C]:	\varnothing ~1,97"
Length [A]:	~15,35 inches
Weight (net):	~25 oz
Gross weight:	~32 oz
Risk group (DIN EN 62471):	Free group
Markings:	CE, UKCA, ETL Listed (5003529)
Dimmable:	External PWM < 5 kHz
Made in:	Germany
Feature:	Food & Beverage compliant: Ecolab, NSF, and HACCP certified