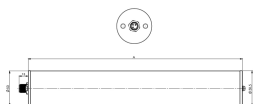
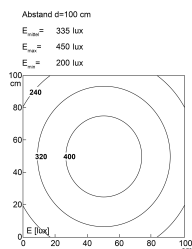


## LED tube luminaire



<b>Product-Nr.</b>	158210-02
<b>EAN:</b>	4260556628394
<b>Model:</b>	INROLED 50 CleanPro ECO
<b>Order number:</b>	158210-02
<b>Model:</b>	INROLED 50 CleanPro ECO
<b>Type:</b>	LED tube luminaire
<b>Illuminant:</b>	SMD LED
<b>Power consumption:</b>	~13 W
<b>Lamp luminous flux:</b>	2004 lm
<b>Lamp luminous efficiency:</b>	~155 lm/W
<b>Light distribution:</b>	Direct
<b>Light colour:</b>	5700K 3-step MacAdam
<b>Colour rendering (Ra):</b>	>85
<b>Supply voltage:</b>	24V DC $\pm$ 10%
<b>Connection (connector):</b>	M12 A-coded
<b>Number of poles:</b>	3
<b>Degree of protection:</b>	IP67/IP69K
<b>Class of protection:</b>	III
<b>Glare control:</b>	opal white
<b>Beam angle (optics):</b>	100°
<b>Operating temperature:</b>	-22 °F - 158 °F
<b>Cleaning temperature:</b>	Up to max. +176 °F (light off)
<b>Storage temperature:</b>	-22 °F - 176 °F (-30 °C - +80 °C)
<b>Lamps lifetime:</b>	> 100.000 h (L80/B10)
<b>Housing material:</b>	Tube – Polycarbonate, matte, shatter-resistant with Ecolab coating   Cap/M12 plug – V4A stainless steel
<b>impact resistance:</b>	IK09
<b>Height [B] x Width [C]:</b>	$\varnothing$ ~1,97"
<b>Length [A]:</b>	~22,24 inches
<b>Weight (net):</b>	~33 oz
<b>Gross weight:</b>	~40 oz
<b>Risk group (DIN EN 62471):</b>	Free group
<b>Markings:</b>	CE, UKCA, ETL Listed (5003529)
<b>Dimmable:</b>	External PWM < 5 kHz
<b>Made in:</b>	Germany
<b>Feature:</b>	Food & Beverage compliant: Ecolab, NSF, and HACCP certified