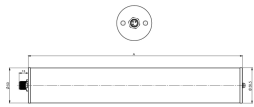


LED tube light



Product-Nr.	158490-01
EAN:	4260556628363
Model:	INROLED 50 CleanPro RGB-W
Order number:	158490-01
Model:	INROLED 50 CleanPro RGB-W
Type:	LED tube light
Illuminant:	SMD RGB-W Cluster LED
Power consumption white:	~38,4 W
White lamp luminous flux:	4860 lm
Lamp luminous efficiency:	126 lm/W
Power consumption RED:	~38,4 W
Lamp luminous flux RED:	960 lm
Power consumption GREEN:	~10 W
Lamp luminous flux GREEN:	1420 lm
Power consumption BLUE:	~36,5 W
Lamp luminous flux BLUE:	600 lm
Light distribution:	Direct
Light colour white:	5700K 3-step MacAdam
Colour rendering WHITE (Ra):	>85
Supply voltage:	24 V DC -10 % +7 % (RGB) – 24 V DC ±10 % (W)
Connection (connector):	M12 A-coded
Number of poles:	5
Degree of protection:	IP67/IP69K
Class of protection:	III
Glare control:	opal white
Beam angle (optics):	100°
Operating temperature:	-22 °F - 131 °F (several colours 95 °F)
Cleaning temperature:	Up to max. +176 °F (light off)
Storage temperature:	-22 °F - 176 °F
Lamps lifetime:	> 100.000 h (L80/B10)
Housing material:	Tube – Polycarbonate, matte, shatter-resistant with Ecolab coating Cap/M12 plug – V4A stainless steel
Impact resistance:	IK09
Height [B] x Width [C]:	Ø ~1,97"
Length [A]:	~41,93 inches
Weight (net):	~59 oz
Gross weight:	~71 oz
Risk group (DIN EN 62471):	Free group
Markings:	CE, UKCA, ETL Listed (5003529)
Dimmable:	External PWM <5 kHz
Made in:	Germany
Feature:	Food & Beverage compliant: Ecolab, NSF, and HACCP certified
Note:	RGB-W: Illumination and beacon in one light