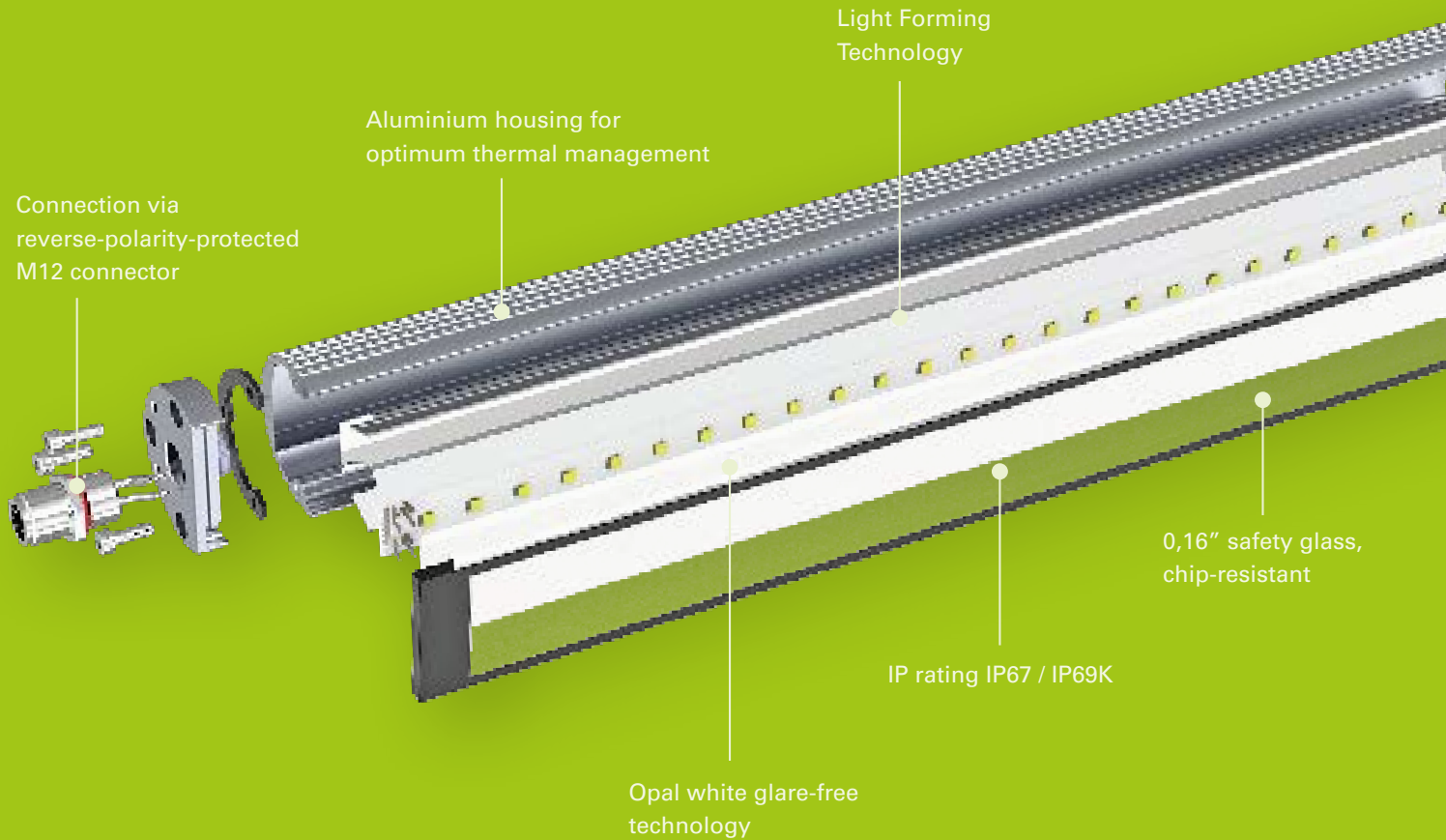


Product overview

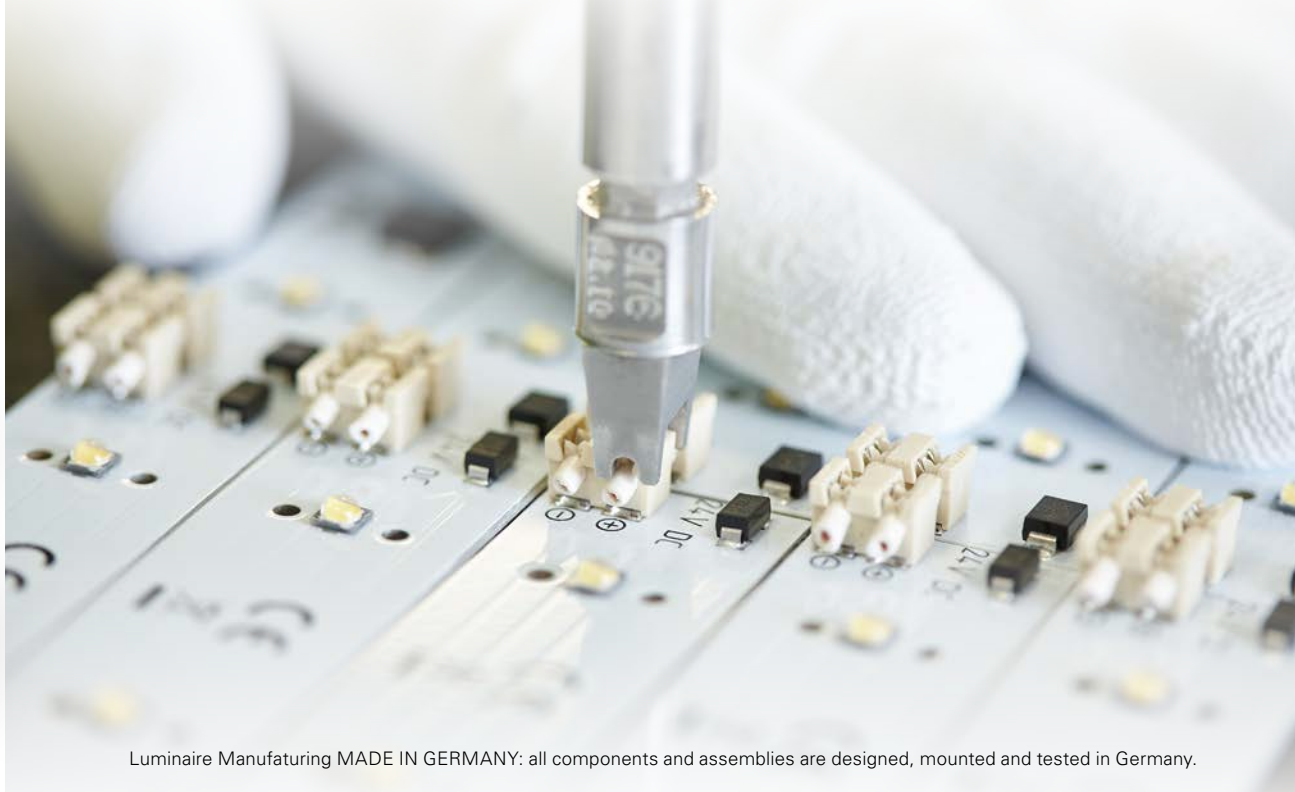
LED industrial lighting

- For Workplaces
- Machines & Production Plants
- Production Lines
- Food, Beverage & Pharmaceutical
- Logistics & Building Technology
- Dental, Medical & Chemical Laboratories
- Jewelry & Watch Industry

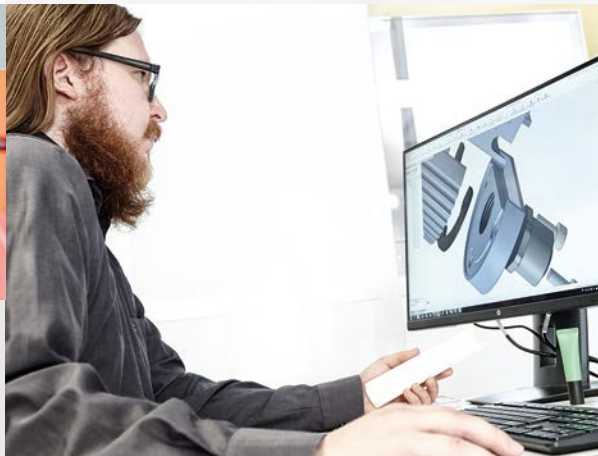
LED2WORK – Intelligence in Light



LED2WORK is a proven leader in advanced LED lighting solutions for workplaces, machines, and production facilities. Our products are engineered for maximum durability, delivering reliable performance even in the toughest industrial environments. By combining German engineering with innovative design, we create lighting that improves productivity, reduces downtime, and enhances safety. Every light is built to provide lasting value, giving you peace of mind and a clear advantage on the job.



Luminaire Manufacturing MADE IN GERMANY: all components and assemblies are designed, mounted and tested in Germany.



Made in Germany

Industrial environments demand lighting that can handle complexity and perform without compromise. At LED2WORK, we manage every step of the process—from design and testing to full-scale production—to ensure consistent, top-tier quality. Engineered and built in Germany, every light is designed, assembled, and tested under strict quality standards. This commitment to precision manufacturing delivers unmatched reliability and long-term value.

- Smart thermal management for longer life and consistent performance
- Premium-grade LEDs with stable brightness and color temperature
- Exceptional color accuracy (CRI 98+) for true-to-life visibility
- 5-year warranty for lasting peace of mind
- Maintenance-free design reduces service costs and downtime



LED system lights

LED system lights are designed for demanding visual tasks where precision and consistency are critical. From electronics and automotive to metalworking and assembly, these lights deliver bright, even illumination that supports high-quality results across multiple industries. Built to integrate seamlessly with existing workstation systems, they combine versatility with superior lighting performance.

Special features:

- Compatible with most common workstation systems
- Low UGR values (<22) to reduce glare and meet industrial workplace standards
- Wide product range to cover diverse applications

Ideal for:

- Machines and production plants
- Assembly and testing stations
- Inspection workstations
- Electronics and metalworking industries



LED flex arm lights

The CENALED SPOT Flexarm features a highly flexible gooseneck that is water-proof and oil-resistant, making it ideal for demanding production environments. In addition to the flex arm design, the CENALED SPOT is also available with an articulated arm or swivel head option.

Special features:

- Durable flex arm, tested for more than 33,000 bending cycles
- Holds its position firmly once adjusted

Ideal for:

- Machines, manufacturing facilities, assembly, and workshops
- Dental, medical, and chemical laboratories
- Jewelry and watchmaking industries

LED workplace lighting

Our range of workplace lights is just as versatile as the variety of applications.

Our workplace lights are sought after wherever excellent lighting conditions are required, and where precise, focussed light is crucial for quality. They enable good contrast vision with a very high degree of colour rendering. Ergonomic LED lights are available in different sizes and designs, depending on the respective application requirements.

- Uniform, shadow-free illumination of the work surface
- Glare-free and flicker-free light for comfort and accuracy
- Smooth, flicker-free dimming for flexible brightness control
- Available in multiple sizes and designs to fit any workstation setup

The CENALED LENS series delivers powerful, precise illumination through a specially designed lens system. Built for demanding industrial environments, these lights provide focused, high-intensity lighting where accuracy and clarity are critical.

Special features:

- 4 dpt magnification (2×) for detailed inspection and precision work
- Optimized lens design for concentrated, glare-free lighting
- Energy-efficient LED technology with long service life
- Robust housing, resistant to dust, oil, and common industrial fluids

Ideal for:

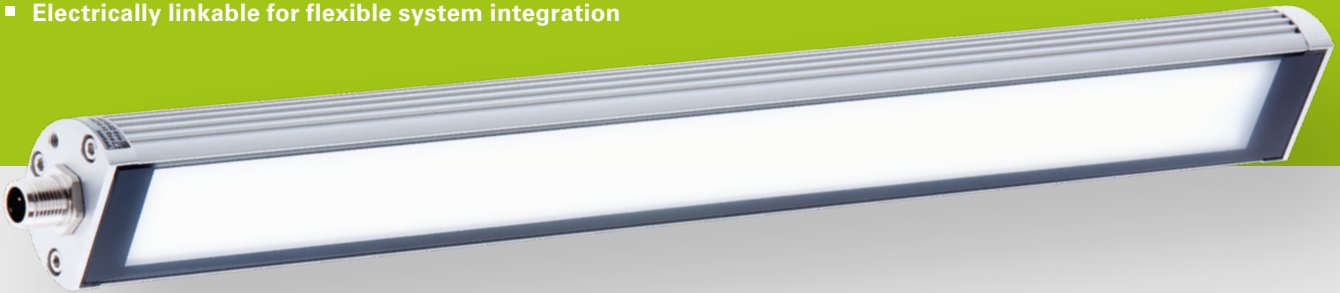
- Precision machining and inspection areas
- Assembly workstations requiring focused light
- Electronics, medical, and fine-detail applications



LED machine lighting

Our LED machine lights are engineered to perform in the toughest conditions. Built with durable aluminum housings, glare-free safety glass, and high-quality seals, they deliver reliable performance even when exposed to heat, oil, water, metal chips, or coolants. These lights are designed to keep working where others fail, making them the trusted choice for demanding machine environments.

- Compact design for tight installation spaces
- Rugged and highly resistant to wear and damage
- Shock- and vibration-resistant for reliable operation
- Electrically linkable for flexible system integration



LED surface-mounted lights

LED surface-mounted lights are a versatile solution for both OEM equipment and retrofit projects. They provide powerful illumination for large machines and production lines, while also excelling in tight or confined spaces where spotlights are required close to the workpiece. With flexible installation options and direct connection to machine power supplies, they're built for seamless integration into almost any setup.



Special features:

- Wide range of industrial applications
- Direct connection to machine supply voltage
- Compact designs suited for tight spaces

Ideal for:

- Machines and production plants and Assembly lines
- Vision and inspection systems

LED integrated lights

LED integrated (recessed) lights provide bright, flicker-free, and glare-free illumination inside machine enclosures. Designed for flush installation, they eliminate exposed edges where chips, dust, or debris could collect—keeping workspaces cleaner and safer. Their space-saving design makes them ideal for tight mounting areas or direct placement near the workpiece. These lights are also a reliable choice for camera-based quality monitoring.

Special features:

- Compact, recessed design for tight installation spaces
- Flush mounting prevents buildup of chips or debris
- Direct connection to machine supply voltage

Ideal for:

- Machines and production plants
- Assembly lines, vision systems and vehicle construction





Machine tube light direct replacement

The TUBELED_70 EVO is a direct replacement for traditional 70 mm glass tube lights that are still widely used in machines around the world. Designed for seamless retrofitting, it provides brighter, more efficient, and longer-lasting illumination compared to outdated fluorescent and glass tube lighting. Installation is simple, and the rugged design ensures reliable performance even in demanding machine environments.

Special features:

- Direct retrofit for 70 mm glass machine tube lights
- Energy-efficient LED technology reduces power consumption
- Extended service life minimizes downtime and replacement costs
- Flicker-free, glare-free light improves operator safety and accuracy

LED cascadable lights

LED cascadable lights are designed for seamless integration where extended or continuous lighting is required. Multiple units can be connected electrically, creating a consistent, flicker-free lighting line across machines, workstations, or production areas. Their compact design and rugged construction make them an efficient choice for demanding industrial environments.

Special features:

- Cascadable design for linking multiple lights in series
- Even, flicker-free illumination across extended areas
- Robust housing for industrial environments
- Easy electrical connection for fast installation

Ideal for:

- Machines and production plants
- Assembly and inspection lines
- Large industrial workstations

LED tube lights

LED tube lights are engineered for environments with strict hygiene and durability requirements, such as food, beverage, and pharmaceutical industries, as well as traditional industrial applications. Resistant to acids, alkalis, and cleaning agents, these lights are available in multiple diameters and certified to meet strict standards. With excellent thermal management, they provide long service life and reliable illumination in demanding conditions.

Special features:

- Available in diameters of 50mm (1.97"), and 70mm (2.76")
- NSF, HACCP certified and FDA-compliant materials (series dependent)
- High resistance to chemicals and cleaning agents

Ideal for:

- Food & pharmaceutical industries
- Machines and production plants





LED signal lights

LED signal lights provide both illumination and clear visual communication. Integrated into machine or plant controls, they use RGB LEDs to show operating status—downtime, fault, or normal production—so operators can react quickly and keep processes efficient. Easy to retrofit, ideal for new installs or upgrades.



Special features:

- Multiple signaling options for machine/system status
- Optional daylight-white LEDs for added visibility (RGB+W)
- Even, low-shadow illumination for large areas
- IO-Link compatibility

Ideal for:

- Automation machines
- Packaging, processing, machining, and other areas where signaling is important



RGB-W



IO-Link
IT'S POSSIBLE

The LED2WORK product portfolio

LED WORKPLACE LIGHTING

LED FLEX ARM LIGHTS AND ARTICULATED ARM LIGHTS

CENALED SPOT
Flex Arm



CENALED LENS
Flex Arm



CENALED SPOT
Articulated Arm



CENALED SPOT
Pivoting Head



LED MACHINE LIGHTING

LED SURFACE-MOUNTED LIGHTS

FIELDLED EVO



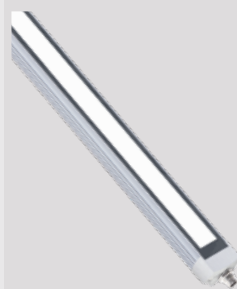
LEANLED II



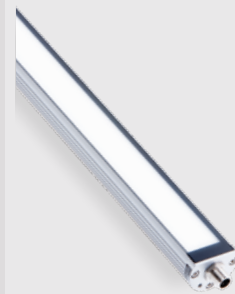
CENALED SPOT



TUBELED_25



TUBELED_40 II



LED LIGHTS WITH SIGNAL FUNCTION

LED TUBE LIGHTS

INROLED 50 CleanPro



INROLED_70



LED TASK AND SIGNAL LIGHTS

DOMELED
DOMELED IO-Link



INROLED_50 CleanPro
RGB-W



SIGNALED II RGB
SIGNALED II RGB-W



LED SYSTEM LIGHTS

PROFILED



SYSTEMLED EVO



UNILED SL



LED INTEGRATED LIGHTS

TUBELED_70 EVO



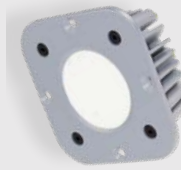
VARILED II



FIELDLED EVO



CENALED SPOT



TUBELED_40 II
Integrated



TUBELED_40 II RGB-W



TUBELED_25 RGB-W
TUBELED_25 RGB-W IO-Link



UNILED SL RGB-W



TUBELED_40 II
Integrated RGB-W



Consultation and ordering
made easy. We look forward
to hearing from you!

You can reach us directly:
mail@led2work.com



LED2WORK Inc.
150 North Michigan Avenue, 35th Floor
Chicago, Illinois 60601
Phone: +1 (312) 585 8002
Fax: +1 (312) 644-0738
mail@led2work.com



www.us.led2work.com